

Tall single-lever washbasin mixer 72298D



Collection: ALEO

Finish*:



CP - Polished
Chrome

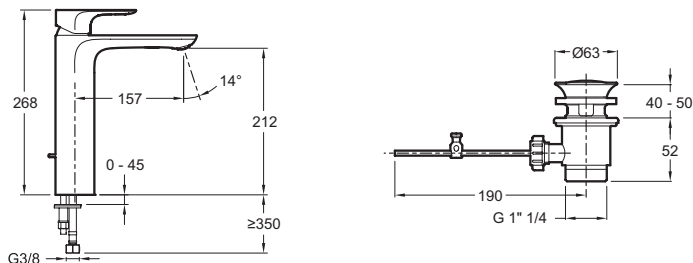
Main features:



Features

- **Installation:** 1 hole
- **Flow rate:** 5 l/mn
- **Height under spout:** 268 mm
- **Mechanism:** Ceramic disc cartridge
- **Height under aerator:** 212mm
- **Anti-twist supply hoses:** Easier tap mounting, no problems with tangled hoses
- **Metal waste**
- **Normes: Standards:** ACS (Certificate of Sanitary Compliance): 10 ACC LY 113
- **Flow rate:** 5 l/mn
- **Connection:** With supply hoses
- **Flow restricted to 5L/min** for water efficiency and comfort of use – less risk of splashing
- **Discreetly-positioned, anti-scale aerator:** Easy replacement with no special tool (you can use a coin) and easier cleaning
- **Side lift rod:** Easier installation on small washbasins, more user accessibility

Technical drawing



Product Specification: Tall single-lever washbasin mixer. 72298D. Collection: ALEO. Installation: 1 hole. Normes: Standards: ACS (Certificate of Sanitary Compliance): 10 ACC LY 113. Flow rate: 5 l/mn. Flow rate: 5 l/mn. Height under spout: 268 mm. Connection: With supply hoses. Mechanism: Ceramic disc cartridge. Flow restricted to 5L/min for water efficiency and comfort of use – less risk of splashing. Height under aerator: 212mm. Discreetly-positioned, anti-scale aerator: Easy replacement with no special tool (you can use a coin) and easier cleaning. Anti-twist supply hoses: Easier tap mounting, no problems with tangled hoses. Side lift rod: Easier installation on small washbasins, more user accessibility. Metal waste.