



Collection: FAIRFAX

Finish*:



CP - Polished
Chrome

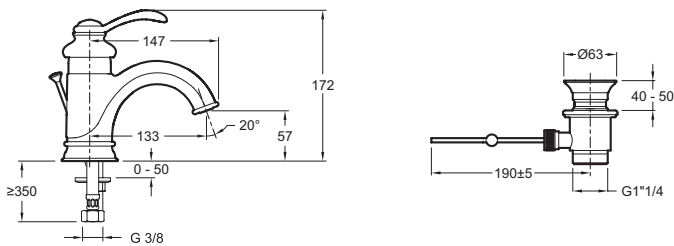
Main features:



Features

- Weight: 2.1 kg
- Flow rate: 12 l/min.
- Mechanism: Ceramic disc cartridge
- Integrated, concealed anti-scale aerator
- Installation: 1 hole
- Connection: With supply hoses
- Retro style with a modern touch on a single-lever mixer
- Temperature limiter ring

Technical drawing



Product Specification: Single-lever washbasin mixer. 12182D. Collection: FAIRFAX. Weight: 2.1 kg. Installation: 1 hole. Flow rate: 12 l/min.. Connection: With supply hoses. Mechanism: Ceramic disc cartridge. Retro style with a modern touch on a single-lever mixer. Integrated, concealed anti-scale aerator. Temperature limiter ring.