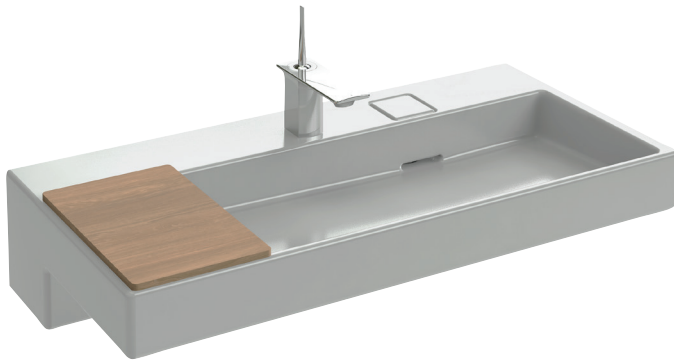


### 1-hole vanity top 100 x 49 cm XC112K



Collection: TERRACE

Finish\*:



00 - White

Main features:



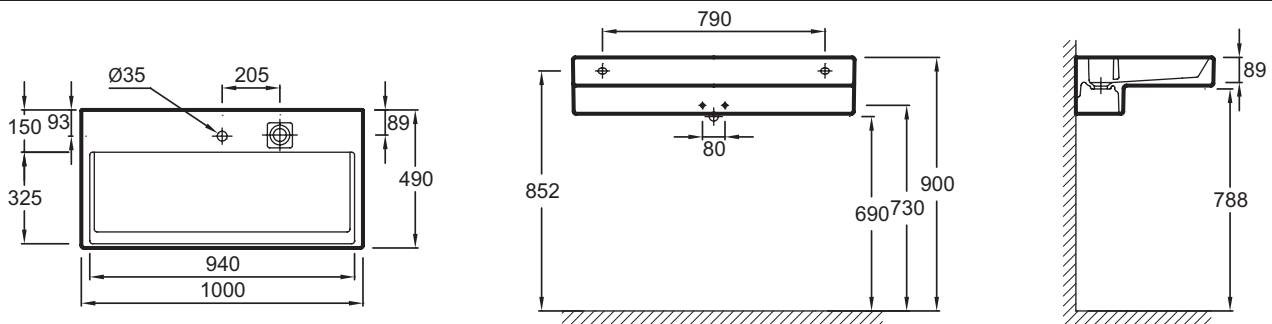
### Features

- Dimensions: 100 x 49
- Material: Ceramic
- Faucet drilling: 1 faucet hole
- Innovative concealed drain system patented by Kohler
- Weight: 31.5 kg
- Installation: Self-supporting or can be mounted on a specific cabinet
- Geometrically-inspired L-shaped vanity top provides a functional design element
- Vanity Top 100 X 49 cm with LED strip lighting (230 V / 12 V) XC9112K

### Optional products

- E78291: Design bottle trap 1 1/4" - long version
- EB1187: Base unit 100 cm
- E4916: Tray for vanity top
- E4906: Towel rail, left
- E4905: Towel rail, right

### Technical drawing



Product Specification: 1-hole vanity top 100 x 49 cm. XC112K. Collection: TERRACE. Dimensions: 100 x 49. Weight: 31.5 kg. Material: Ceramic. Installation: Self-supporting or can be mounted on a specific cabinet. Faucet drilling: 1 faucet hole. Geometrically-inspired L-shaped vanity top provides a functional design element. Innovative concealed drain system patented by Kohler. Vanity Top 100 X 49 cm with LED strip lighting (230 V / 12 V) XC9112K.