



Collection: STRAYT

Finish*:



CP - Polished
Chrome

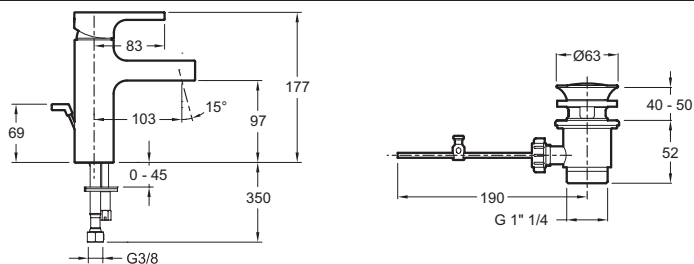
Main features:



Features

- Weight: 2.8 kg
- Flow rate: 5 l/mn
- Inkl. pop-up drain
- Anti-scale aerator
- Installation: 1 hole
- Connection: With supply hoses
- Water saving feature
- Ceramix disc cartridge

Technical drawing



Product Specification: Single-lever washbasin mixer. 37327D. Collection: STRAYT. Weight: 2.8 kg. Installation: 1 hole. Flow rate: 5 l/mn. Connection: With supply hoses. Inkl. pop-up drain. Water saving feature. Anti-scale aerator. Ceramix disc cartridge.