



**Collection:** OBL0

**Finish\*:**



CP - Polished Chrome

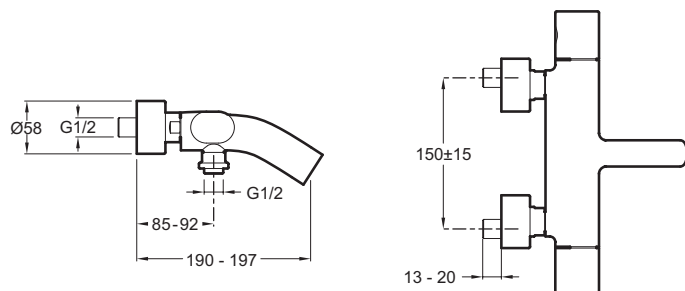
**Main features:**



## Features

- **Weight:** 3.5 kg
- **Flow rate:** 28 l/min
- **Hole configuration:** 150 ± 15 mm
- Discreetly-positioned bath/shower diverter (around shower outlet)
- Integrated anti-scale aerator
- **Installation:** Wall-mount
- **Mechanism:** Ceramic disc heads
- The simple, ergonomic design offers a sleek, modern appeal with a European influence
- Non-return valve on shower outlet

## Technical drawing



Product Specification: 2-handle wall-mount bath-shower mixer. 10105D. Collection: OBL0. Weight: 3.5 kg. Installation: Wall-mount. Flow rate: 28 l/min. Mechanism: Ceramic disc heads. Hole configuration: 150 ± 15 mm. The simple, ergonomic design offers a sleek, modern appeal with a European influence. Discreetly-positioned bath/shower diverter (around shower outlet). Non-return valve on shower outlet. Integrated anti-scale aerator.