

## Thermostatic single-lever wall-mount bath/shower mixer 10089D



**Collection:** OBLO

**Finish\*:**



CP - Polished  
Chrome

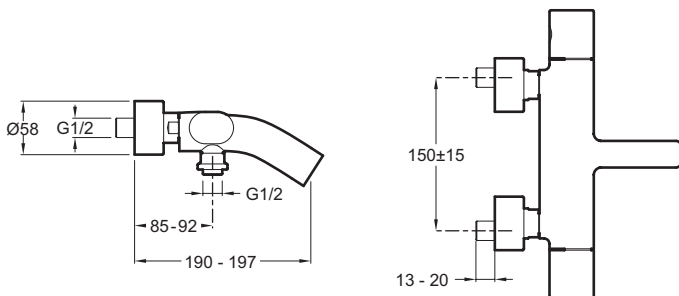
**Main features:**



### Features

- **Weight:** 3.6 kg
- **Flow rate:** 19 l/mn
- **Mechanism:** Thermostatic cartridge with dilatable wax
- The simple, ergonomic design offers a sleek, modern appeal with a European influence
- Discreetly-positioned bath/shower diverter (at shower hose outlet).
- Non return valves on supply connections
- **Installation:** Wall-mount
- **Connection:** With connectors and wall escutcheons
- **Hole configuration:** 150 ± 15 mm
- **Safety stop** at 38° C, temperature limited to 50° C.
- **Metal handles** with laser marking
- **Integrated anti-scale aerator**

### Technical drawing



Product Specification: Thermostatic single-lever wall-mount bath/shower mixer. 10089D. Collection: OBLO. Weight: 3.6 kg. Installation: Wall-mount. Flow rate: 19 l/mn. Connection: With connectors and wall escutcheons. Mechanism: Thermostatic cartridge with dilatable wax. Hole configuration: 150 ± 15 mm. The simple, ergonomic design offers a sleek, modern appeal with a European influence. Safety stop at 38° C, temperature limited to 50° C.. Discreetly-positioned bath/shower diverter (at shower hose outlet).. Metal handles with laser marking. Non return valves on supply connections. Integrated anti-scale aerator.